

**North Yorkshire****Local Access Forum****4 December 2015****Minerals and Waste Joint Plan – Preferred Options Consultation****Report of the Secretary****1.0 Purpose of the Report**

- 1.1 To advise members of the current consultation on the Minerals and Waste Joint Plan – Preferred Options, and to invite the Forum to consider whether it wishes to respond to the consultation.

**2.0 Background**

- 2.1 North Yorkshire County Council, City of York Council and the North York Moors National Park Authority are producing a minerals and waste joint plan which will cover the period up to 2030.
- 2.2 Preferred options is an important stage of the development of the minerals and waste joint plan. It takes forward the selected options from the issues and options consultation and develops them into preferred options which, if found suitable, will form the basis of the final draft policies before submission of the plan for examination in public by an independent inspector.
- 2.3 Following assessment, using the procedures identified in the site identification and assessment document, a selection of sites have been identified as suitable to enable the delivery of relevant preferred policies in the plan.
- 2.4 The preferred options for both policies and sites are presented in the preferred options consultation documents. A leaflet summarising the consultation is attached as Appendix 1.

The consultation can be viewed here:

[www.northyorks.gov.uk/mwconsult](http://www.northyorks.gov.uk/mwconsult).

Previous consultation documents, including summaries of responses and reports, and evidence are available on the archive page.

**3.0 Responding to the consultation**

- 3.1 An officer from the Plans and Technical Services team will attend the meeting to give a brief overview of the consultation and respond to Forum members' questions.
- 3.2 The closing date for responding to the consultation is 15 January 2016.

#### **4.0 Recommendation**

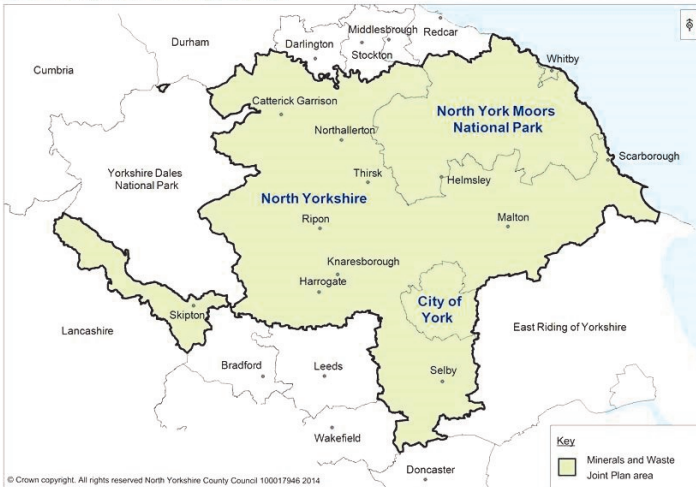
- 4.1 That the Local Access Forum considers the content of any response it wishes to submit to the Minerals and Waste Joint Plan – Preferred Options consultation.

BARRY KHAN  
Assistant Chief Executive (Legal and Democratic Services)  
County Hall  
NORTHALLERTON

Report author: Kate Arscott, Secretary to North Yorkshire Local Access Forum

**Background Documents:** None

# Minerals and Waste Joint Plan



# Preferred Options Consultation

## November 2015– January 2016

# About the Minerals and Waste Joint Plan

---

As mineral and waste planning authorities, North Yorkshire County Council (NYCC), City of York Council (CYC) and the North York Moors National Park Authority (NYMNP) are working together to prepare a Joint Minerals and Waste Plan. When finalised, this will be a long term plan to help take decisions about matters such as where, when and how minerals, including gas, and waste developments should take place up to 2030.

## Progress so far

Work on the Joint Plan started in May 2013 when we sought views on what the Plan should contain. We used these responses to help identify the key issues facing the area and identified possible policy options on how to deal with them.

The Issues and Options consultation in February 2014 set out a number of possible options for new policies to deal with the key issues. It also included a number of sites for minerals or waste development which had been submitted for consideration for inclusion in the plan.

As a result of additional sites coming forward, a second round of consultation was carried out in the form of the Supplementary Sites consultation, which commenced in January 2015.

We have looked at the responses received to our earlier consultations, together with other available evidence, and are now seeking your further views on the preferred policy approach.

We would like to know what you think about the preferred policies, and sites that we have identified, the draft vision and objectives and the policy options contained in the full **Preferred Options Consultation**.

## Next Steps

A further consultation on a final draft version of the Plan will take place in 2016.



# The Preferred Options Consultation


---

The consultation sets out the preferred approach of the Authorities to taking decisions on minerals and waste related development and sets out guidelines for where, when and how much minerals and waste related development should take place in the Plan area.

As well as containing policies for each mineral type and the different types of waste produced in the area, there are a number of policies dealing specifically with development management issues such as transport and protection of the environment and communities.

## How to get involved

You can help us by telling us:



**If you agree with the Preferred Policy approaches put forward ?**

**The closing date for this consultation is 15th January 2016**



## How do I respond to the consultation?

The Preferred Options Consultation contains a number of specific questions on which we would like your views.

A response form has been produced to help you respond. Electronic versions are available to download from our website, which can be saved and emailed to [mwjointplan@northyorks.gov.uk](mailto:mwjointplan@northyorks.gov.uk) or sent using the postal address overleaf.

Alternatively, there is an e-form which can be completed on our website [www.northyorks.gov.uk/mwconsult](http://www.northyorks.gov.uk/mwconsult)



## How can I find out more?

More details about the consultation including supporting documents and the response form are available to view and download from our website [www.northyorks.gov.uk/mwconsult](http://www.northyorks.gov.uk/mwconsult)

As part of the consultation we are holding a series of drop-in sessions across the Plan area. The locations and dates of the events are identified on Page 8 of this leaflet.

# Minerals – Policies and Sites

---

The Plan area is a significant producer of minerals with over 50 active quarries. The Preferred Options consultation set out draft policies to respond to the key issues, some of which are identified below:

- Ensuring continued availability of important minerals;
- Maintaining the required supply of sand and gravel, crushed rock, silica sand and clay in line with national planning policy
- Considering the potential positive and negative impacts of developing unconventional hydrocarbons resources such as shale gas, as well as planning for conventional forms of energy minerals;
- Encouraging the use of more sustainable alternatives to supply of aggregate minerals;
- Safeguarding important minerals resources and infrastructure for the

future;

- Minimising the local impacts of minerals extraction on communities, the environment and other important matters;
- Providing for a range of benefits through reclamation of workings.

In addition to the draft policies the consultation identifies a number of sites that are considered suitable in principle, subject to necessary planning permission, for future quarrying and related development.

The broad distribution of the preferred sites are shown on the map opposite. Reference numbers of the sites are identified below. Further details on the location and nature of the site proposals is available in Appendix 1 to the main consultation, which can be accessed here:

[www.northyorks.gov.uk/mwsites](http://www.northyorks.gov.uk/mwsites)

## Site Allocations:

### Hambleton District:

MJP06, MJP07, MJP33, MJP43

### Harrogate Borough:

MJP04, MJP51, MJP35, MJP11

### Richmondshire District:

MJP03

### City of York:

MJP52

### Ryedale District:

MJP08, MJP12, MJP30, MJP63, MJP13

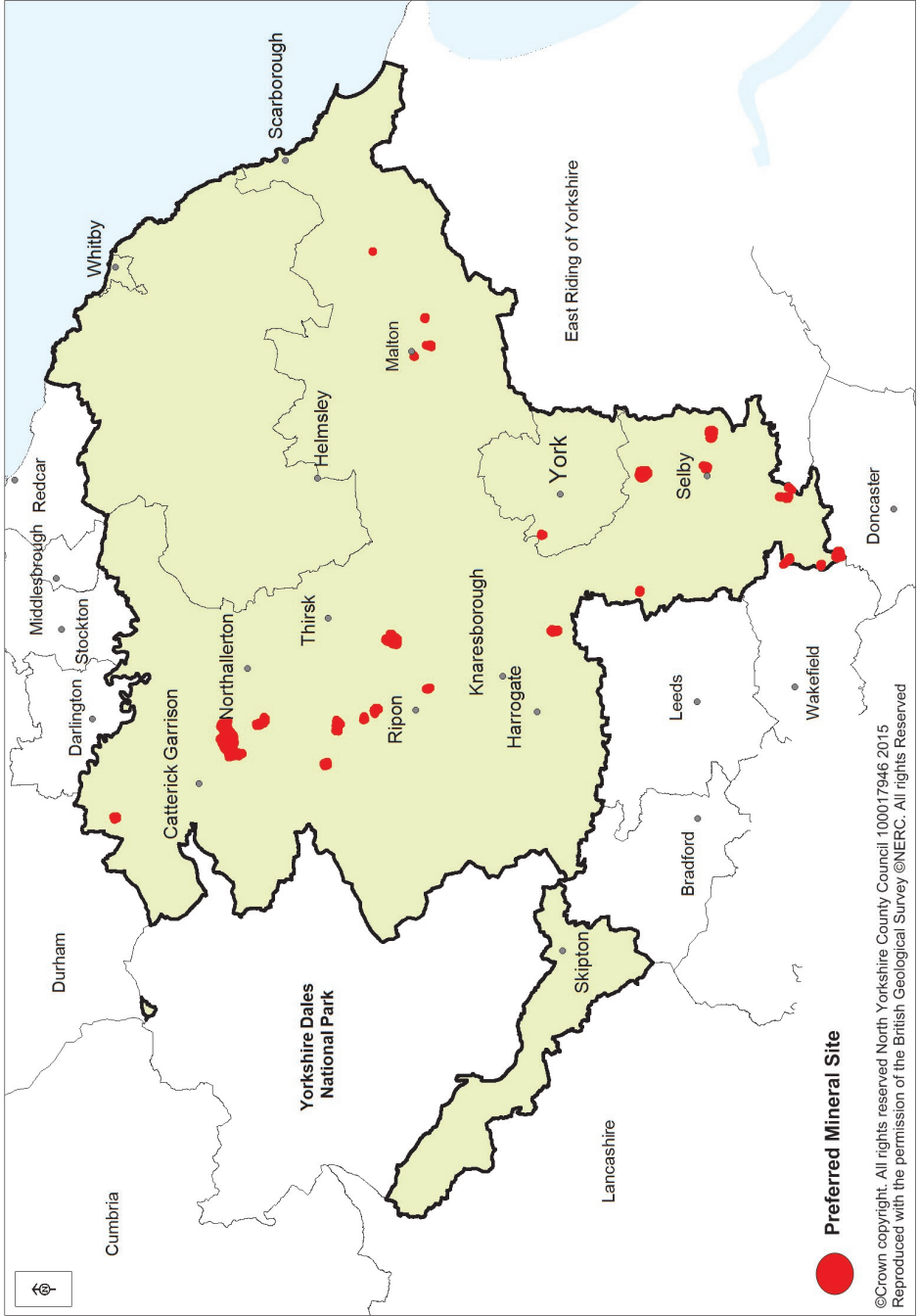
### Selby District:

MJP45, MJP55, MJP28, MJP23, MJP22  
MJP44, MJP54, MJP09, MJP24, MJP27,  
MJP26

### Cross Boundary Sites:

MJP14 (Harrogate/ Hambleton)

MJP21, MJP17 (Hambleton/ Richmond)



 Preferred Mineral Site

© Crown copyright. All rights reserved North Yorkshire County Council 100017946 2015  
 Reproduced with the permission of the British Geological Survey ©NERC. All rights Reserved

# Waste – Policies and Sites

---

Waste is produced by a wide range of domestic, commercial and industrial activities, sometimes in large quantities. The Preferred Options consultation sets out draft policies to respond to the key issues facing the area in relation to waste.

The key issues covered within the Plan include:

- Promoting more sustainable management of waste such as through more recycling and less landfill;
- Supporting the provision of the additional waste management capacity expected to be required to meet future needs;
- Providing flexibility to help deal with uncertainty resulting from rapid changes to waste technologies and practise;
- Identifying the right types of locations for waste management facilities;

- Minimising the impacts of waste management on communities, the environment and other important matters; and
- Safeguarding strategically important waste management infrastructure for the future.

In addition to the draft policies, the consultation identifies a number of sites which are considered suitable in principle for waste development.

The broad distribution of the sites is shown on the map opposite.

Reference numbers of the sites are identified below.

Further details on the location and nature of the proposals are available in Appendix 1 to the main consultation which can be accessed here:

[www.northyorks.gov.uk/mwsites](http://www.northyorks.gov.uk/mwsites)

## Site Allocations:

### Craven District:

WJP13, WJP17

### Harrogate Borough:

WJP08, WJP23

### Richmondshire District:

WJP01, WJP18

### Scarborough Borough:

WJP15

### North York Moors National Park:

WJP19

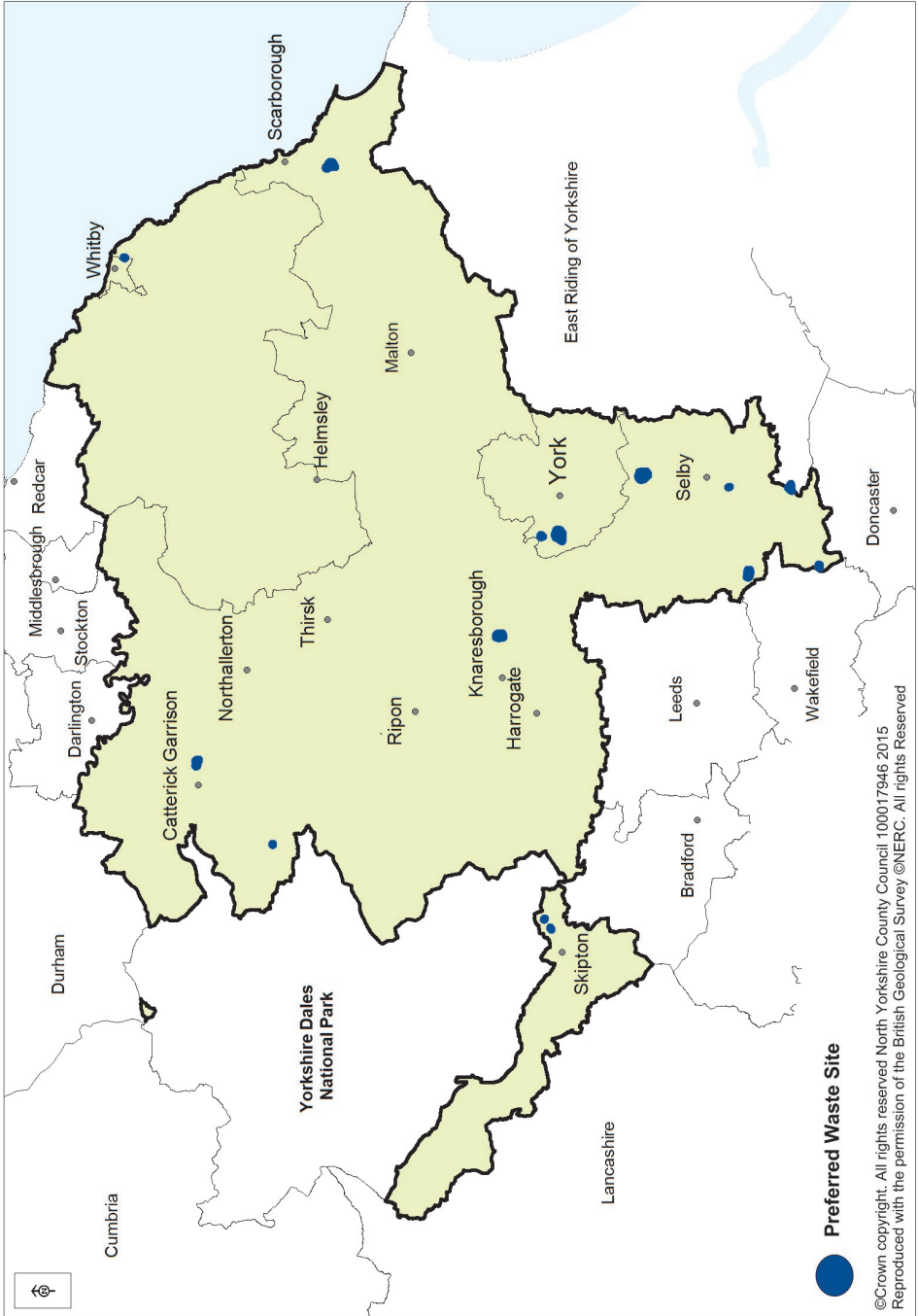
### Selby District:

WJP10, WJP16, WJP06, WJP21, WJP22

### City of York:

WJP05, WJP11





**Preferred Waste Site**



©Crown copyright. All rights reserved North Yorkshire County Council 100017946 2015  
 Reproduced with the permission of the British Geological Survey ©NERC. All rights Reserved

## Consultation events

As part of the consultation we are holding a number of drop-in sessions in locations across the Plan area. The events will provide an opportunity for anyone who would like to find out more to discuss the consultation with a member of the team.

The locations and dates of the events are identified below.



## Where can I view the consultation documents?

Paper copies of the Consultation can be viewed at

- All libraries, including mobile libraries;
- At the main offices of NYCC, CYC and NYMNP and district and borough Councils

Copies on CD and in paper format are available upon request.

<b>Monday</b>	<b>23rd</b> November: Ripon Library 1-6pm	<b>30th</b> November Bedale Library 2-5pm	<b>7th</b> December Selby Library 1-7pm
<b>Tuesday</b>	<b>24th</b> November: Malton/Norton –The Old Courthouse 1-7pm	<b>1st</b> December : Tadcaster Library 2-6pm, and York City Council West Offices 12-5pm	<b>8th</b> December Whitby Library 1-7pm, and Leyburn Library 1.30-6pm
<b>Wednesday</b>	<b>25th</b> November: Skipton Town Hall 1-6pm	<b>2nd</b> December: Northallerton Library 1-6pm, and Rufforth Village Hall 3.30-7pm	<b>9th</b> December: Eggborough Sports and Leisure Complex 1-7pm
<b>Thursday</b>	<b>26th</b> November: Scarborough Library 1-7pm	<b>3rd</b> December: Richmond Library 2-6pm	
<b>Friday</b>	<b>27th</b> November: Knaresborough Library 1-7pm	<b>4th</b> December: Helmsley, The Old Vicarage 1-7pm	

## Contact us

Minerals and Waste Joint Plan, Planning Services, North Yorkshire County Council, County Hall, Northallerton, North Yorkshire, DL7 8AH

Tel: 01609 780780 Email: [mwjointplan@northyorks.gov.uk](mailto:mwjjointplan@northyorks.gov.uk)